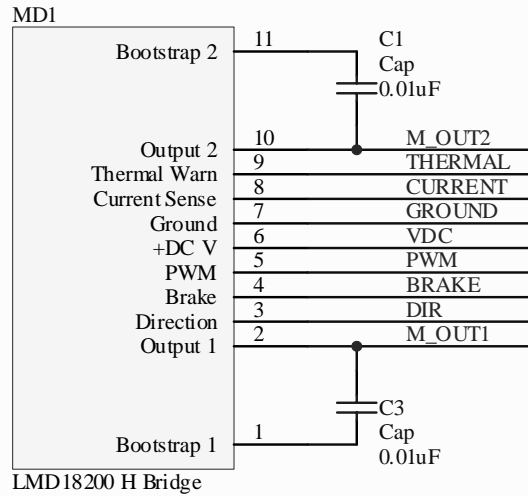
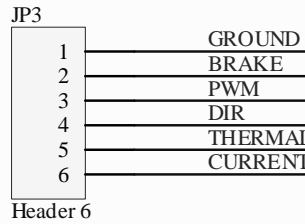
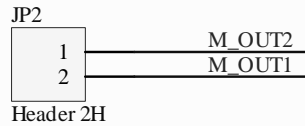


# LMD18200 Motor Driver

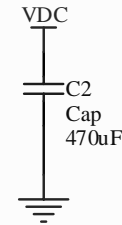


LMD18200 H Bridge

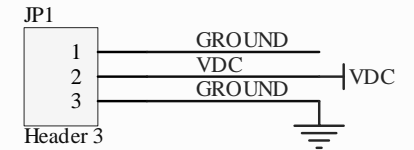
## Headers



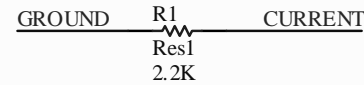
## Board Capacitance



## Battery Connection



## Voltage Generating Resistor



Title: 12V DC/3A Motor Driver - LMD18200 H Bridge	
Designed By: Steven Pickles (spickles@ufl.edu)	Date: March 23, 2005
Sheet Number: 01 / 01	Revision: B
Notes: Read the datasheet for information on the National Semiconductor LMD18200 H Bridge motor driver. The supply voltage must be 12V DC minimum at all times otherwise the chip will not function. For more information: <a href="http://www.spickles.org/projects/lmd18200/">www.spickles.org/projects/lmd18200/</a>	